



Planning

The Road to Success

Your educational facilities serve as symbols of pride for their community, and properly preparing the next generation of leaders, artists, and thinkers requires dedication and planning.

You've worked hard to create an academic curriculum that will provide students with the skills, knowledge, and experience needed to succeed in life. Now, we must ensure that your facilities are able to provide a safe, supportive, and comfortable learning environment for years to come.

Once your facility goals have been identified, we will assist you in preparing for the revitalization efforts and implementation of construction by:

- Analyzing the capabilities of existing facilities to provide students and faculty with an engaging learning environment
- Assessing the educational adequacy of your facilities to ensure that they are compatible with modern educational resources and technologies
- Performing an operational cost analysis of your existing facilities to identify if aging infrastructure can be repaired or renovated affordably
- Prepping existing facilities for renovation and rehabilitation
- Securing funding and referendums in order to minimize the costs incurred by the school district and local community



Changing Times

Students aren't the only ones learning and growing. Each generation brings new technology, new teaching methods, and a new understanding of how to pass knowledge on to our children.

Too often our educational facilities are unable to keep pace with this evolution. As facilities age, their ability to provide educators with proper resources and students with a comfortable environment diminishes.

The SiteLogIQ Approach

Finding the right solution for your school district is our top priority. Whether that means renovating an existing facility or beginning a new construction project, our goal is to provide you with a long-term facility management plan that is affordable, attainable, and sustainable.

We'll work with the school board, key faculty, and members of the community to ensure that the needs, goals, and concerns of all parties are addressed during the project.

"As you may imagine, a project scope of this magnitude is bound to have some surprises and glitches. Retrofitting systems in these vintage of buildings, plus working around tight occupancy schedules has presented our share of challenges. When issues have popped up, SiteLogIQ's staff has stepped forward with the solution to the issue of the day. We have been very satisfied with their engineering and project management approach."

Al Stoeckman (now retired), Superintendent
Yellow Medicine East Schools



What is a Master Plan?

SitelogIQ will help the district and its stakeholders develop a long-range facility plan. SitelogIQ will facilitate a proven, iterative process that will involve goal setting, information gathering, and strategic decision making.



IDEATION



ASSESSMENT



OPTIONS

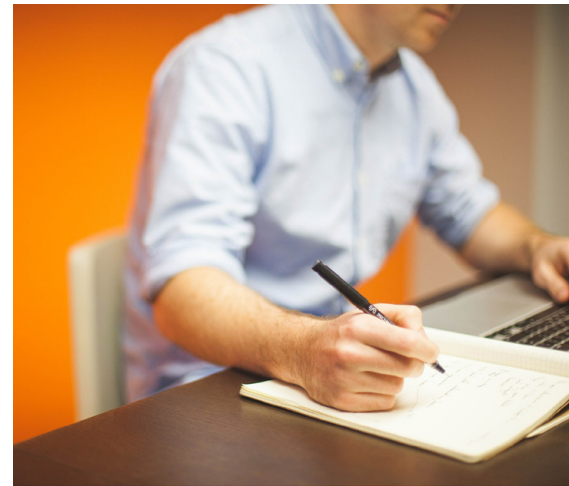


CONSENSUS

Can your existing facilities be revitalized in order to create a functional, modern learning environment, or will new construction be more affordable and more successful in the long term?

By working with district leadership, the project plan will help us understand your educational goals, identify opportunities to revitalize existing facilities, and implement changes that foster positive academic achievement.

The Master Plan will be updated as needed to include new information and discoveries made during the Assessment phase. These discoveries are inevitable with any large-scale revitalization or construction project, and will help to identify potential disruptions and roadblocks to your long-term educational goals.



A Strong Master Plan Examines

EDUCATION NEEDS

- Curriculum/Educational programming
- Technology and resources
- Professional development

CONSTRUCTION NEEDS

- Cost and time
- Environmental quality (air, heat, lighting)
- Asset condition (age, utility)
- Safety and security

FUNCTIONAL NEEDS

- Enrollment and capacity
- Grade configuration
- Community use/multi-functional capabilities

FINANCIAL NEEDS

- Operating costs
- Project funding

Our Goal

You have an opportunity to improve the quality and functionality of your school district's educational facilities. We're here to ensure that you're able to accomplish that goal effectively and affordably by:

SUPPORTING DISTRICT STRATEGIC PLANNING

- Support district educational objectives by developing a strategic long-term plan & actionable short-term goals
- Evaluate facilities in terms of operating cost efficiency
- Evaluate facilities in terms of ability to support educational programming

PROMOTING FINANCIAL STABILITY AND OPERATIONAL PERFORMANCE

- Reduce long-term costs and ensure financial stability
- Minimize local costs and tax impact

CREATING POSITIVE ACADEMIC IMPACT

- Our work has proven to positively impact student academic achievement and minimize absenteeism

Once the Master Plan has been finalized and agreed upon by district and community leaders, it will be distributed to all stakeholders, contractors, and subcontractors to ensure that the project moves forward on-time and on-budget.

888.819.0041

www.sitelogiq.com



Engineering

Opportunities & Solutions

School districts often find themselves in the unfortunate position of having to choose between allocating precious resources to either curriculum development or facility maintenance.

The systems and infrastructure within your school district's educational facilities have a significant impact on operating costs, student performance, and health and safety.

Whether you're revitalizing an existing facility or building from the ground up, we'll help you implement a cost-effective system for controlling the comfort, quality, and safety of your facility.

Creating a facility that is both financially and environmentally sustainable means:

- Managing energy consumption and water usage
- Improving indoor air quality
- Optimizing thermal comfort
- Providing abundant, natural light
- Minimizing noise distractions
- Implementing modern fire and safety controls



Aging Infrastructure

The average public school in the U.S. is 42 years old, according to the National Center for Education Statistics.

Many of these facilities are still in good condition. However, just like homes built in that era, schools were built to accommodate the educational needs of the time.

Technology, education, design, and construction methods have improved dramatically over the past 40 years. Modern facilities run more efficiently and provide students and teachers with the ability to capitalize on the latest and greatest technologies.

"Deferred maintenance costs have reached \$271 Billion."

Building Educational Success Together (BEST), 2010

Mounting Costs

According to Building Educational Success Together (BEST), deferred maintenance costs reached \$271 Billion as of 2010.

With every passing year, school districts are asked to do more while their financial resources are slowly diminished. The educational needs of students will always come first, but that means another year of deteriorating infrastructure, aging equipment, and inefficient systems.

The longer these repairs are put off, the greater the cost will be to finally address them. Our goal is to help you find an affordable and effective solution that will modernize your facilities without draining precious resources away from education.

888.819.0041

www.sitelogiq.com



BENEFITS OF MODERN INFRASTRUCTURE

Operating Cost Reduction

Not only is modern equipment much more powerful and efficient, but the technologies for controlling them allow even greater control over their usage and performance.

With energy and utility costs accounting for nearly one third of every school district's yearly budget, updating these systems will free up much needed financial resources that can be re-invested in your educational programming.

Improved Academic Performance

For years, researchers and education organizations have studied the effects of physical conditions on students' and teachers' abilities to perform.

The results have shown time and again that students perform better on tests, miss fewer school days, and have more positive attitudes in schools with proper temperature control, ventilation, and lighting. These schools are also more likely to attract and retain qualified educators and staff.

Air Quality

According to the Environmental Protection Agency, approximately 25% of public schools provide unsatisfactory ventilation, and indoor pollutants can often be 2 to 5 times higher than outdoor levels.

Air quality has a direct and significant impact on the health of both students and teachers. Airborne bacteria and mold contribute to the development of asthma in children, and poor ventilation contributes to the spread of illness.

The American Lung Association estimates that students in the U.S miss a combined 10 million school days each year as a result of poor indoor air quality.

Thermal Comfort

We can't all live in San Diego, which means having to deal with drastic fluctuations in temperature year-round, especially here in the Midwest. Modern HVAC systems are much better suited for regulating temperature and enable school's to provide a comfortable learning environment for students and teachers.



EVALUATING YOUR INFRASTRUCTURE

It can be difficult to identify how and where your facilities could benefit from renovation or equipment upgrades. Our experienced team of engineers will help you implement a comprehensive facility control system through:

Facility
Assessment

Indoor Air
Quality
Assessment

Planning &
Optimization

Exploration of
Alternative &
Renewable Energy

We'll help you find the right balance between addressing the most critical needs and positioning your facility for long-term financial and functional stability.



Construction

Building For Today

Creating a comfortable, functional, and efficient facility is crucial to reaching your long-term goals, but it's also important to create a modern facility that reflects the pride, tradition, and ambition of your school district.

Our goal is to help you create facilities that are sustainable, accessible, functional, and safe. As a professional services company, we're proud to remain vendor neutral, which allows our experienced team to identify professionals who are best suited for creating the educational environment you deserve.

Our team of experts will work with you to:

- Assess the physical condition and utility of existing facilities
- Design modern learning spaces that serve your educational goals
- Create multi-functional facilities that serve the entire community
- Ensure that your facilities are accessible to all
- Utilize efficient, affordable, and sustainable building materials



Building For The Future

Many educators believe that there is a direct correlation between the physical appearance and quality of a school, and the performance and productivity of both students and teachers.

Schools are a symbol of pride for the communities they serve. It's our job to help ensure that they remain that way for generations to come. By utilizing modern, durable, and energy efficient materials, we'll help you manage operational costs and prevent deferred maintenance costs down the road.

Protecting Your Investment

Your staff has dedicated themselves to crafting your school's educational programming, and sourced the best technology and resources available. You've installed modern infrastructure to help your facility run efficiently and affordably while keeping students and staff comfortable.

However, nature and time seem determined to undo that hard work. We'll help you assess the structural integrity and performance of critical barriers, including doors, windows, walls, and roofing, to ensure that your facility is able to protect your investments for years to come.

"20% of Americans spend time in a school building on any given day, and the average school building is 50 years old."

National Clearinghouse for Educational Facilities

888.819.0041
www.sitelogiq.com

IMPACT OF MODERN CONSTRUCTION ON YOUR COMMUNITY

Building a new school is an investment in the future; the future of your district, your community, and your students. Modern construction benefits from the development of sustainable, affordable, and green materials without sacrificing quality, performance, or durability.

Modern construction will also allow your district to accommodate growing enrollment needs, attract qualified teachers and staff, and operate more efficiently than their aging counterparts. New construction will also generate more local jobs as we look to partner with contractors and local professionals within the community.

IMPACT OF MODERN CONSTRUCTION ON ACADEMIC PERFORMANCE

There are a number of physical factors that impact student and teacher performance within school facilities.

Thermal Comfort

Temperature plays a significant role in our ability to think clearly, focus, and maintain positive morale. Discomfort from being too hot or cold creates a distraction to both students and teachers.

Since the 1970's, studies have been conducted to identify the optimal temperature for academic performance (between 68-74 degrees). Modern building materials make it possible to maintain a safe, comfortable, and functional learning environment.

Acoustics

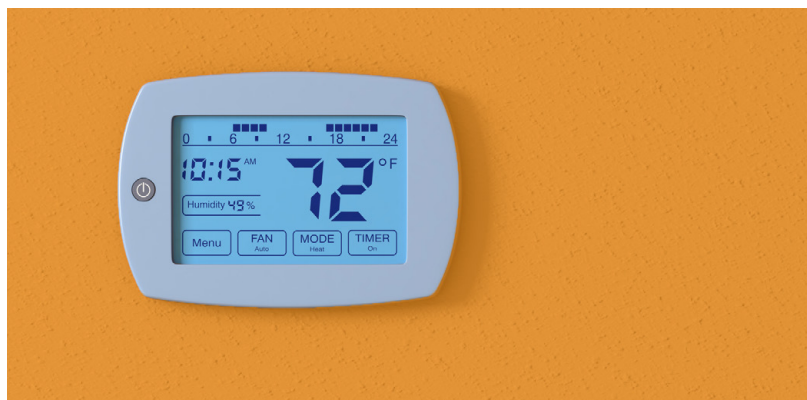
Excessive noise is distracting and can increase our stress level. However, poor acoustics can also make it difficult for students to hear and retain information.

Proper design and construction will isolate external noise and improve the overall acoustics of your classrooms.

Lighting

Classroom lighting plays a critical role in both performance and well-being. Students with access to more natural lighting have been shown to perform better on tests, reduce off-task behavior, and demonstrate more positive attitudes.

The physical benefits of natural lighting are well documented, but relying on natural light where possible, and high-efficiency lighting elsewhere, can also provide a significant cost and environmental impact reduction.





Program Management

What is a Program Management Firm?

As a Program Management Firm, SitelogIQ assists school districts with the revitalization, renovation, and new construction of educational facilities.

With an experienced team of in-house architects, designers, engineers, and project managers, SitelogIQ is able to provide more efficient and cost-effective solutions for the long-term facility management needs of K-12 schools.

SitelogIQ's experience and understanding of the construction process eliminates high contingency costs and streamlines projects to ensure that they stay on schedule and within budget.

Letting Educators Be Educators

SitelogIQ helps to ease the administrative burden that school districts typically encounter when working with independent professional services providers such as architects, engineers, designers, and builders. When working with independent

providers, school administrators are required to manage multiple relationships, keep track of the various timelines and schedules, and act as an intermediary between multiple parties that are only responsible for a small portion of a much larger project.



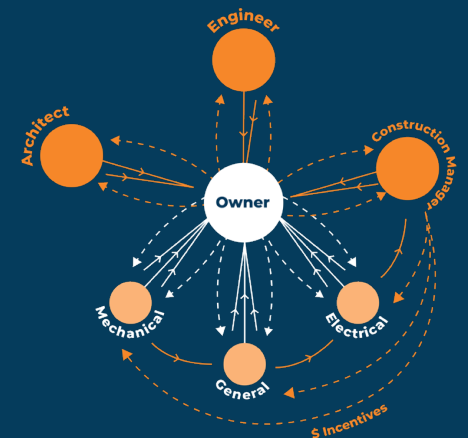
Building For The Future

SitelogIQ's comprehensive approach stands in direct contrast to this silo approach by providing school districts with a single point of contact who will provide them with up to date information about the project, answer any questions they might have, and provide the peace of mind that can only be found by working with an experienced Project Management Firm.

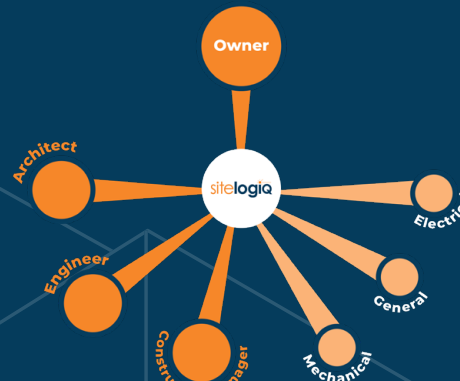
SitelogIQ's team holds almost 900 years of planning, design, engineering, and construction expertise; having implemented over \$850 million in educational facility improvements for more than **one hundred K-12 Districts throughout the Midwest.**

School Administrators spend nearly 1/2 of their workday managing contracts, service provider communications, and project needs throughout the process of renovation or construction. On average, this costs administrators over 1,000 hours of time.

Old Approach



New Approach



888.819.0041

www.sitelogiq.com



PUTTING YOUR NEEDS FIRST

Another concern when working with independent professional services providers is the concept of “over-engineering.” This is the term used to describe the extra time, costlier products, and unnecessary work that independent architects and engineers will add on to protect themselves if something goes wrong and the finger-pointing begins.

This approach to design and building puts the interests of the contractors in front of the needs of the district. SitelogIQ is able to eliminate overengineering by employing an in-house team of architects, engineers, designers, and builders.

Our experts work together long before the project moves into the construction phase to ensure that each project stays within budget and is delivered on time.

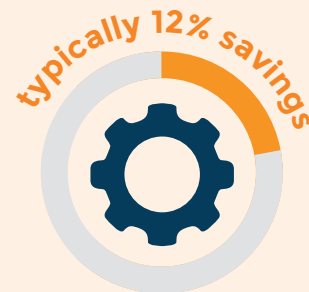
COMMITMENT TO LONG-TERM SUCCESS

Beyond the streamlined communication and project management process, SitelogIQ is committed to ensuring the long-term success of your facility project. Independent providers are only required to honor their work until the warranties expire (typically 1-3 years), and are seldom held accountable for their work.

When SitelogIQ assists your district in the development of a Master Plan, it is a statement that we will continue to work by your side until the project is complete. We'll help you create a Master Facilities Plan that will allow your district to reach its educational goals, maintain your facilities, and ensure financial stability long after you cut the red ribbon.



**Avoid mark ups
on mark ups**



**Eliminate over-engineering
through synergy of design**



**Lower expected
contingencies from the 8%
industry standard**



Architecture

More Than Just a Building

Your educational facilities stand as symbols of pride that reflect the communities they serve, and symbols of hope for our future. But the building exterior is more than just an aesthetic consideration; it helps maintain efficiency and structural integrity.

The SitelogIQ design team will help you create innovative learning environments that foster creative thinking, and make both students and teachers excited to come to school.

21st Century Education Deserves 21st Century Solutions

The modern classroom has transformed from a lecture hall into a collaborative zone. Our design team will help you create a unique and immersive educational environment that keeps students and teachers engaged, inspired, and productive.

By providing increased flexibility, a focus on collaboration and communication,

and incorporating support for new educational technology, your teachers will be able to create a learning environment that works for every student.

SitelogIQ is committed to creating 21st Century solutions that are flexible, support future technology, and connect students and faculty to each other and their learning environment.



When Vision Becomes Reality

After assessing the needs of your school district, and by taking enrollment projections into consideration, we'll be able to provide you with a facility that is equipped to support your students and faculty for years to come. SitelogIQ's in-house team of experts includes talented architects whose expertise is in the design of educational facilities. However, if your district prefers to work with an incumbent architect, we're happy to work along with them to ensure that your educational needs are met.

If your district decides on a renovation or revitalization project, SitelogIQ will guide incumbent architects through the challenges presented by the aging infrastructure in your educational facilities.

Dedication To Education

By focusing our efforts on education, the SitelogIQ team has developed a deep understanding of the unique challenges your district faces regarding your facilities. Our specialists have assisted other districts in school planning, finance options, engineering, and project management, along with other technical initiatives of concern exclusively to educational facilities.



888.819.0041

www.sitelogiq.com

Alternative Funding Opportunities

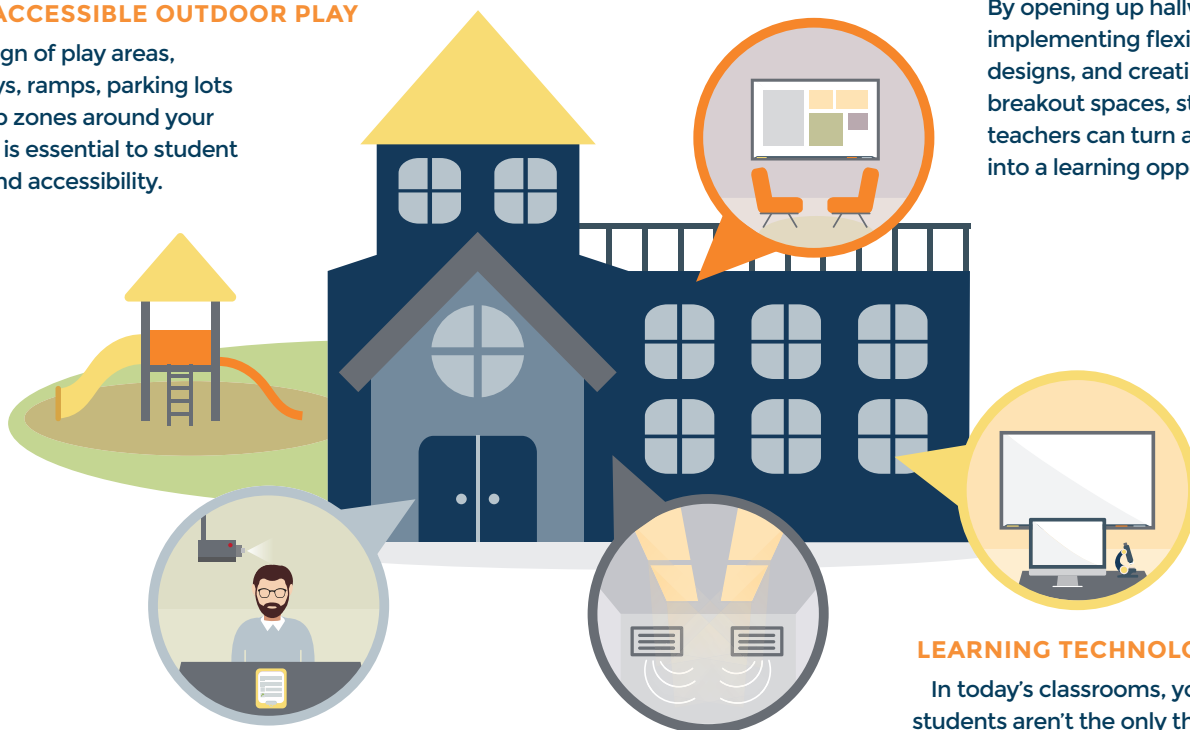
Typical architecture firms identify building improvements that require either a bond referendum or use of capital budget resources. But what if those options aren't available to your district? SitelogIQ can help identify opportunities for alternative funding, especially funding associated with energy-efficiency savings, the alternative facilities levy, lease levy, and tax abatement levy. Architects are not able to provide the same services as certified energy services companies (ESCOs), organizations that are qualified and bonded to develop guaranteed energy savings projects.

SAFE/ACCESSIBLE OUTDOOR PLAY

The design of play areas, walkways, ramps, parking lots and drop zones around your facilities is essential to student safety and accessibility.

LEARNING SPACE

By opening up hallways, implementing flexible room designs, and creating informal breakout spaces, students and teachers can turn any space into a learning opportunity.



SAFE & SECURE ENVIRONMENT

Relocating front offices to the main entrance and adding new technology will increase your school's safety and security.

LEARNING ENVIRONMENT

With improved lighting, ventilation, heating & cooling, and noise reduction systems, your students and teachers will enjoy a distraction-free education.

LEARNING TECHNOLOGY

In today's classrooms, your students aren't the only things that are "smart." Old classrooms were not designed with modern technology in mind.

Beyond Architecture

Architects play a vital role in SitelogIQ's team of K-12 facilities experts; however, our team is also comprised of professional engineers, designers, technical analysts, finance leaders, commissioning agents and construction managers whose sole focus is optimizing K-12 facilities' functionality and longevity. These qualities make us stronger than typical architecture firms that would have to outsource for the same level of expertise that is part of SitelogIQ's in-house staff.



Referendum Support

Our Proven Process

Schools are experts at instruction. Yet many districts face a steep learning curve to inform and persuade taxpayers to support school referenda.

SiteLogIQ has the experience and resources to assist districts in educating the public through various means and methods. An organized campaign to inform voters of the needs, issues, solutions, and the impact, is essential, as well as getting the community involved in this crucial endeavor.

Your referendum campaign must be an ongoing, daily process in your district from the time you identify the specific needs to Election Day.

SiteLogIQ's referendum support services will work with you to develop a clear and concise vision for your community that emphasizes the need for the project. The stronger the educational need is articulated throughout the bond campaign, the higher the resulting "yes" vote. A successful campaign means improving facilities that will serve students and their community long into the future.



Planning For Referendum Success

SiteLogIQ will assist the district and stakeholders to develop custom communication strategies and design creative materials that visually and thoroughly convey your district's needs through our IDEA referendum process.



IDENTIFY



DEVELOP



EDUCATE



ASSESS

IDENTIFY

After you have made the final decisions on a project requiring voter approval, it is important to specify your needs, understand your audience, channels of communication, and community "barometer."

DEVELOP

SiteLogIQ collaborates with schools to establish a communication plan with action items and goal dates. Our experienced marketing team will create materials that educate the community regarding the needs and solutions, and convince voters that the needs are warranted.

EDUCATE

Using various channels of media and technology, the communication plan is implemented including public meetings, school tours, and the distribution of tangible and digital messaging.

ASSESS

The communications team will continuously monitor feedback from the community, district website, and social media, then modify the plan appropriately. Communication is the primary objective of a successful campaign.

888.819.0041

www.sitelogiq.com



PARTNERS THROUGHOUT THE ENTIRE PROCESS

From our initial assessment of your facilities to poll closing, SitelogIQ is dedicated in providing you with options that are unique to your community and the revitalization efforts of the district. Your campaign will explain how the needs were determined, the different scenarios considered, and the solution that was reached. Voters will want to know the tax impact and the long-term benefits to students and the community.



REFERENDUM SUPPORT SCOPE OF SERVICES

Print and Website Materials

To educate voters regarding all aspects of the referendum, districts will utilize a variety of strategies to reach this diverse audience.

- Campaign Logos and Branding
- Frequently Asked Questions (FAQs)
- Fact Flyers | Posters
- PowerPoint Presentations
- Press Releases
- Talking Points
- Direct Mailings
- Detailed Videography of Needs and Solutions
- Letters to the Editor

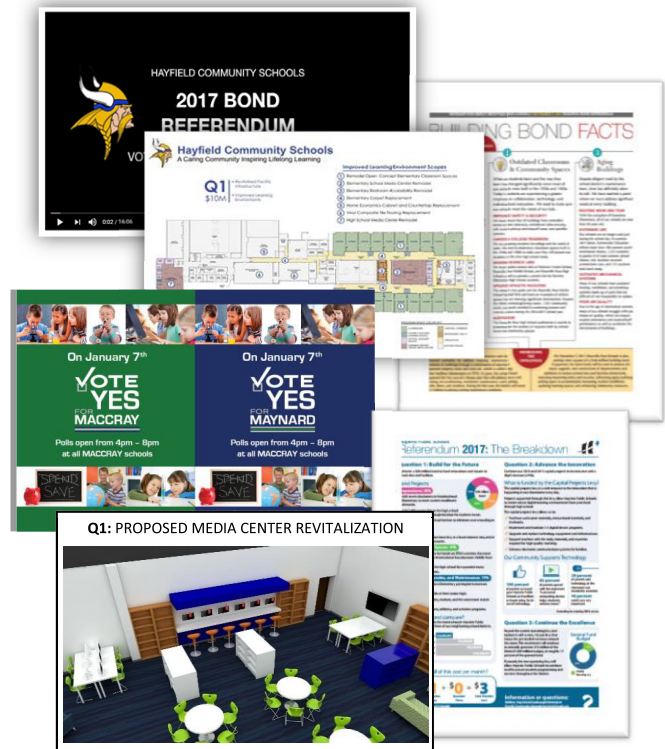
Research

We will assist you to identify persons for, against, and undecided, and acquire information about all channels of communication to access voters.

- Facilitate and Evaluate Community Survey
- Attain Voter File and Create Action Plan
- Identify Media Sources
- Demographics Analysis

Community Outreach

- Public Meeting Assistance
- Get Out the Vote Strategies
- Ongoing, Targeted Social Media Campaign
- Brochures for Distribution





Community Engagement

People are more likely to feel ownership in and support a plan when they have a voice in creating it.

At SitelogIQ, we take seriously the idea that a community is much more supportive of a plan that they have had an opportunity to provide input in than one that is developed strictly by a small group without much public input. When it comes to publicly financed projects, people are particularly sensitive to having a voice in how their tax dollars will be spent. With a referendum, school districts are asking their community to support a significant investment in the education of their students. We have found that communities are much more inclined to react positively to a referendum when they have had an opportunity to provide input into what the solution is.



IDENTIFY



DEVELOP



EDUCATE



ASSESS



The Goals of Community Engagement

- Through transparency, build trust in the District and process
- Educate community members
- Gain community perspective
- Consider and/or brainstorm available options
- Understand and evaluate options and scope of work
- Gain consensus of the group on direction forward
- Provide feedback to the board & administration
- Have confidence in the results
- Community shared

Every Community And Project Are Different

The most appropriate type engagement will vary by community and project. Whether the public participation by your community is simply through listening sessions or as extensive as developing and providing developed options and/or recommendations for a direction forward, SitelogIQ has the team and experience necessary to guide you through this process. Types of community engagement SitelogIQ can assist with include:

- Advisory committees and/or taskforces
- Public meetings
- Surveys
- Open houses
- Workshops

888.819.0041

www.sitelogiq.com

IT'S ALL ABOUT THE PROCESS

Done well, the community engagement decision making process can provide the following advantages:

- Creates a shared vision
- Educates about the real issues
- Generates legitimacy of direction and solutions
- Develops a community sense of ownership and pride in the decision
- Provides an understanding of the community's issues and challenges
- Solutions meets most everyone's needs (not just those of the organization)
- Harnesses community support

The more time allotted to the engagement process, the better the results will be



COMMUNITY SURVEYING

Surveying your community is a great way to engage the breadth of your community and not only communicate your district's most pressing needs, but also gather critical data on what your community will support.

Topics include:

- Referendum timing
- Tax tolerance
- Educational priorities
- Financial priorities
- Overall district and/or school satisfaction

Done right, community surveys have a high degree of predictability. The timing of when a survey is completed depends on the type of engagement process being used and the feedback desired.

- Survey early to introduce needs, gauge community understanding of issues and understand the level of support for broad ideas and the general tolerance of the community relative to tax impact and timing. This helps inform the scope of work for a taskforce.
- Survey later in the process after taskforce work to communicate the efforts of the community group, evaluate specific ideas or options, and gauge support for specific recommendations. This can serve as a "test" for a referendum question.

