

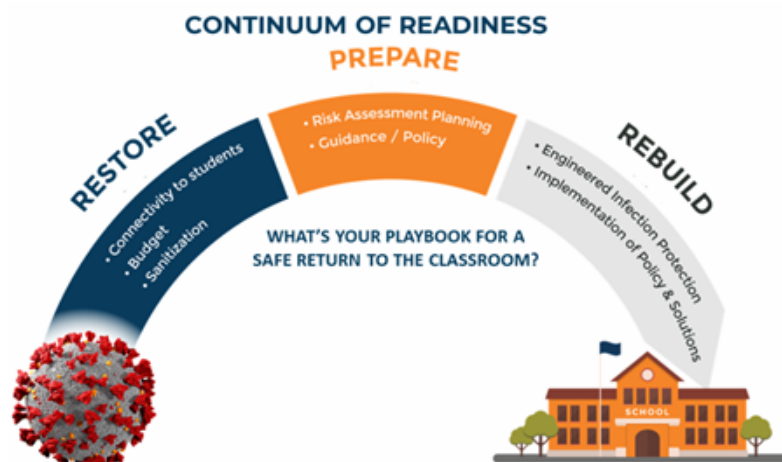
# Engineered Infection Protection (EIP) Assistance

Fall brings the return to school, but also the start of cold and flu season. We all know that each school year, illnesses take center stage at some point leading to student and staff absences. The coronavirus has the potential to be especially impactful this Fall, leading to further school disruptions. Boards and Administrations are tasked with examining proactive solutions to mitigate the impact of bacteria, viruses, dust, and mold.

## Are you interested in:

- Decreasing student and staff absences resulting in improved student performance?
- Retaining resident students in an environment where schools already compete for students and now parents are considering enrollment options more than ever?
- Showing your community – especially parents – that you are investing in the health and well-being of your students and staff?
- Attracting high-quality staff by being recognized as a school district that pays attention to the air quality in its buildings and that its staff members breath?

With students and staff returning to our school buildings, we know your focus is on providing the best possible instruction for students.



This year, this means that you are devoting time and energy to COVID-19 safety protocol, professional development that highlights effective distance learning and hybrid teaching and learning strategies, and ultimately working to ensure your buildings and grounds are as safe as possible.

## Point #1 – Using effective technologies to mitigate risks and infection

The science behind pathogen mitigation equipment and strategies is clear. Ionization, one of several practical strategies which may be recommended by SitelogIQ after an assessment of your facilities, is effective at neutralizing and killing bacteria, viruses, dust, and mold. We know that killing these pathogens and allergens at the surface is an effective method for stopping the spread disease. Additionally, copper alloys reduce the time viruses and bacteria can live on door handles, counter tops and other hard surfaces.

## The Advantage<sup>1</sup>

	GPS* BI-POLAR IONIZATION DEVICE	OTHER BPI	CORONA DISCHARGE	HEPA FILTERS	CARBON FILTERS	ULTRAVIOLET (UV)	UV-PCO
Produces Harmful Byproducts	None	Yes	Yes	No	No	Yes	Yes
Reduces Airborne Particles	✓	Yes	Yes	Yes	No	No	No
Destroys VOCs	✓	Yes	Yes	No	Captures	No	Yes
Kills Pathogens	✓	Yes	Yes	No	Captures	Yes	Yes
Reduces Energy Cost	30%	Yes	Yes	No	No	No	No
UL 2998 No-Ozone Certified	✓	No	No	N/A	N/A	N/A	N/A
Treats In-Room Air	✓	Yes	Yes	No	No	No	No
Maintenance	No	Every 2 years	No	No	Monthly	Yearly	Yearly
Auto Self-Cleaning	✓	No	No	No	No	No	No
Simple to Install	✓	No	No	No	No	No	No
Low Total Cost	✓	Yes	No	No	No	No	No

<sup>1</sup>Based on GPS product comparison materials.

## Point #2 – Instilling Community Confidence

Community confidence is extremely essential right now during the pandemic. Parents and community members want their schools to be as safe as possible for the most precious citizens, the children. Restoring community confidence will not only lead to a healthier community, but retention of students in our public schools will be more likely. Parents are seeking to confidently enroll their children in an option where they have assurance. This has led parents to charter, private, and online options. Ensuring that our public schools have proactive pathogen mitigation strategies and equipment will help restore confidence in our public schools.

### Articles:

<https://www.ashrae.org/technical-resources/reopening-of-schools-and-universities> <https://www.smithsonianmag.com/science-nature/copper-virus-kill-180974655/> <https://mbio.asm.org/content/6/6/e01697-15/figures-only>

### Example City

#### Engineered Infection Protection (EIP) Options Study

SCENARIO	1	2	3	4
	GOOD	BETTER	BEST	TOP 5
City Hall	\$ 342,034	\$ 232,090,090	\$ 232,500,220	\$ 231,889,872
Fire Dept HQ	\$ 38,208	\$ 12,201,033	\$ 12,201,033	\$ 48,916
Animal Shelter	\$ 39,412	\$ 11,420,992	\$ 11,492,992	\$ 25,819
Art Center	\$ 75,519	\$ 87,269	\$ 107,069	\$ 67,145
Senior Center	\$ 70,624	\$ 26,408,134	\$ 26,498,056	\$ 121,333
Community Rec Center	\$ 155,693	\$ 22,455,533	\$ 22,694,573	\$ 245,950
DPW Bldg	\$ 148,624	\$ 9,899,809	\$ 9,981,529	\$ 133,260
<b>Consolidated Cost Estimate</b>	<b>\$ 870,113</b>	<b>\$ 314,562,860</b>	<b>\$ 315,475,472</b>	<b>\$ 232,532,294</b>

## Point #3 – Retaining resident students and attracting high-quality staff

When a student leaves a school, \$8,000-\$10,000 per year follows that child. This can have a negative financial impact on your district. When compounded over several years, this has the possibility to be extremely detrimental to public schools. A proactive solution such as the installation of pathogen mitigation equipment and/or strategies will not only reduce the possibility of the spread of disease, but will also lead to better overall parent satisfaction, and likely limit the loss of students to other options, not to mention keeping students and high-quality staff in school. The financial impact of COVID-19 is concerning and SitelogiQ is committed to working with school leaders to help improve building air quality and overall health.

### Stats:

- Nearly 60% of respondents said they believe their child is at risk of contracting COVID-19, with 66% reporting they or another adult member of their household may be at risk.
- 70% of respondents anticipate more school closures in the next school year.
- Over 40% of brick and mortar parents responded that they would consider continuing online learning for their student next year.

It is a busy, stressful and exciting time as we prepare for the 2020-2021 school year. SitelogiQ is here to assist school leaders during this uncharted journey and to help maintain your facilities for the immediate, future, and long term.

### DISCLAIMER

The document summarizes best practices and recommendations that may help to get K-12 teachers and students back in the classroom faster by identifying and implementing engineered infection protection solutions in the facility environment to support a safe and healthy return. Articles suggest that airborne contamination can be reduced by increasing ventilation and using pathogen mitigation. Research continues in regards to airborne transmission of COVID-19 and the best means for preventing the spread.

SitelogiQ is a national provider of Engineered Infection Protection (EIP), energy efficiency and master facility planning solutions, offering the full range of design, engineering, construction, management, energy, and lighting solutions.

To learn more, visit [sitelogiq.com](https://sitelogiq.com)

