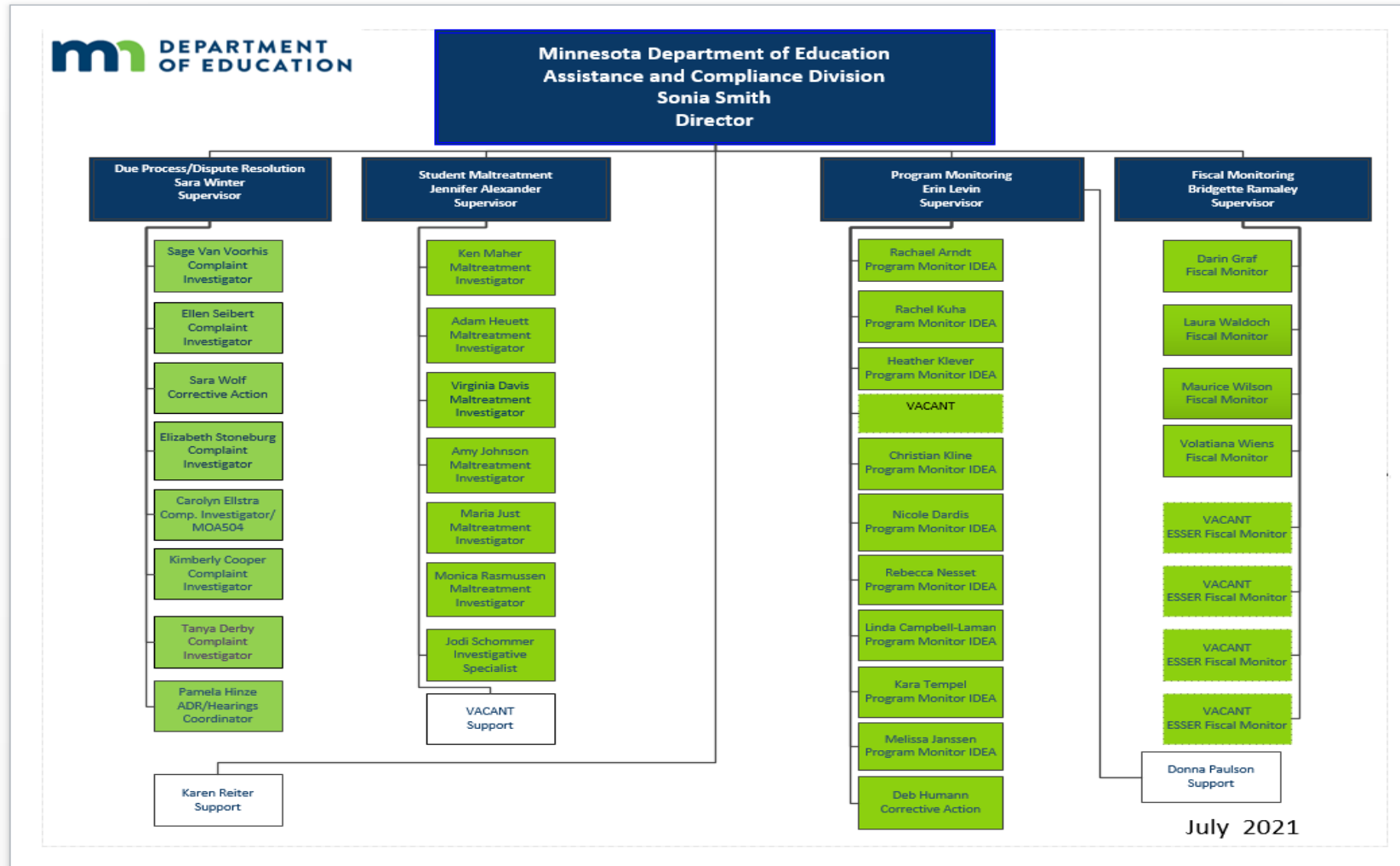




Division of Assistance and Compliance Updates

August 4, 2021

Assistance and Compliance Division



Dispute Resolution Team

Alternative Dispute Resolution (ADR)

	Total Mediations Requested	Total Mediations Held (%)	Total Facilitated Team Meetings (FTM) Requested (%)	Total Facilitated Team Meetings (FTM) Held
FY17	73	42 (58%)	54	39 (72%)
FY18	61	42 (69%)	46	26 (57%)
FY19	69	41 (59%)	52	36 (69%)
FY20	47	30 (64%)	57	35 (74%)
FY21	47	26 (55%)	44	24 (55%)

[Conflicts in Special Education webpage](#)

(<https://education.mn.gov/MDE/dse/sped/conf/>)

Questions about ADR? Contact:
[Pamela Hinze](#)
mde.adrservices@state.mn.us
 651-582-8518

Total Mediations Held:
85 Percent Agreement Rate!!!

Total Facilitated Team Meetings Held:
92 Percent Agreement Rate!!!

Training Opportunities

- Special Education Due Process
- Restrictive Procedures
- Working Through the Legal Framework of Student Discipline
- [Positive Intervention Strategies Training Modules](https://education.mn.gov/MDE/dse/sped/spedtrain/MDE058532)
(<https://education.mn.gov/MDE/dse/sped/spedtrain/MDE058532>)
- [Section 504 Essentials](https://education.mn.gov/MDE/dse/504/) (<https://education.mn.gov/MDE/dse/504/>)

Contact: **Sara K. Wolf** 651-582-8602 | sara.k.wolf@state.mn.us

Minnesota Continuous Improvement Monitoring Process (MNCIMP) is retiring!

Restrictive Procedures Reporting in Stepwell

PHYSICAL HOLDING DATA COLLECTION: DATA SUMMARY

DISTRICT: Monahga Public School District

SPECIAL EDUCATION DIRECTOR: LORI LEE MURDOCK
SPECIAL EDUCATION DIRECTOR PHONE: (218) 631-2281
SPECIAL EDUCATION DIRECTOR EMAIL: lmurdock@floodk12.mn.us

TOPIC: Physical Holding

REPORTING YEAR: 2020-21

5 days left until submission

INSTRUCTIONS
Review the data below to ensure it is accurate. If you need to make adjustments, click the "Data Entry" link above to go back. Once you have verified the data, click "Submit Data" to send the data to MDE. After you have submitted your data, you will not be able to change it without submitting a data change request to MDE.
After you submit your data, the information on this and other pages will remain available to you in a read-only format for a limited time. Click on the "Download Data" button to download this data as an excel spreadsheet. Select individual visualizations to download.

PHYSICAL HOLDING DATA

Category	2020-21	Percent of Total
Total Restrictive Procedures	4	
Physical Holds	4	
Staff Injuries	4	
Students Injuries	1	
Physically Held or Secluded Students (Unduplicated)	1	
Students Physically Held		

Buttons: Download Data, Save and Exit, Save and Go Back, Submit Data

NARRATIVE RESPONSE

1) (Required) The State of Minnesota has a goal to reduce the use of restrictive procedures in our schools. What did your district try this year to reduce the number of restrictive procedures in your district, including addressing disproportionalities? For example, staff training, revised schedules, staffing changes, changes in the use of police liaison officers/school resource officers, increased positive supports, etc. Please be as specific and detailed as possible.

This is a response to narrative question one.

2) (Required) MDE is gathering information on district strategies that have been successful in reducing districts' use of restrictive procedures for the purposes of sharing with other districts in Minnesota. Of the things your district tried this past year, what would you recommend to other districts to reduce the use of restrictive procedures in their schools? Please include any strategies used to successfully identify and address disproportionalities related to the use of restrictive procedures. What additional information regarding these strategies would be helpful to other districts or MDE?

The response to narrative question two is entered here.

Auto Saved on 07:30:08 AM

Buttons: Reset Page, Save and Exit, Save and Go Back, Save and Continue

Report Physical Holding in Stepwell MN!

Physical Holding Office Hours:

Thursday, August 19, 1-3 p.m.

Monday, August 23, 9-11 a.m.

Wednesday, August 25, 11 a.m -1 p.m.

Questions about restrictive procedures reporting?

Restrictive Procedures Website

(<https://education.mn.gov/MDE/dse/sped/restr/>)

For questions about reporting restrictive procedures that are beyond those answered in the Q and A and on the webpage, contact:

Carolyn Ellstra 651-582-8366 | carolyn.ellstra@state.mn.us

Minnesota Department of Education
Special Education Technical Assistance

651-582-8689

mde.assistance-compliance@state.mn.us

Program Monitoring Team

Program Monitoring Process for 2021-22



Partnerships and Assistance

- Input from special education directors
- Partnership with district leaders
- Resources:

[Special Education](https://education.mn.gov/MDE/dse/sped)

(<https://education.mn.gov/MDE/dse/sped>)

[Assistance and Compliance Q and As](https://education.mn.gov/MDE/dse/sped/caqa)

(<https://education.mn.gov/MDE/dse/sped/caqa>)

Fiscal Monitoring Team

Changes for 2021-22:

- Moving into new software
- Possibly a truncated year to make the switch to software
- Possibly a smaller group monitored as a pilot group
- Risk assessment updated

Fiscal Monitoring Risk Assessment

No changes to the following risk assessment elements:

- Expenditures per student
- Were Corrective Action Plans (CAP) last completed within one year
- Was training attended within the past two years (adjusted for years when training was not available)
- When was the subrecipient last monitored

Fiscal Monitoring Risk Assessment (Continued)

Changes to the risk assessment:

- No longer receiving federal risk assessment rankings
- Adding turnover to special education director and business manager positions (will be added in 2021-22 as first available year of tracking)
- Adding size of state and federal special education awards
- Adding data elements from single audits submitted in the Federal Audit Clearinghouse (FAC)

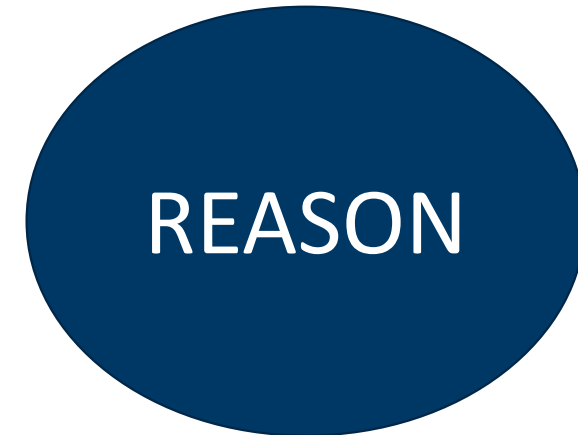
Questioned costs, material weakness cited, anything other than an unqualified opinion, year over year duplicate findings, and credit if it was a completely clean report

Student Maltreatment Team

Student Maltreatment Program (continued 1)

Mandated Reporting

- A Child (Or Student)
- Current or Past Maltreatment
- Within three years
- Police or Responsible Agency



Student Maltreatment Program (continued 2)

Increased Authority under Minn. Stat. § 260E.14

- Students 18 to 21 years old.
- Includes students receiving special education services.
- Up to graduation and issuance of a diploma.

Thank you!